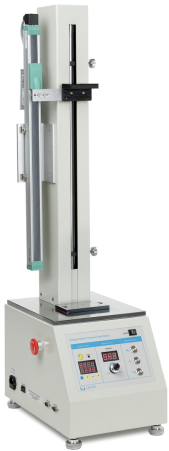


KERN TVO 1000N500S-LD

KERN

Practical set for force-displacement-measurements in laboratory and industry



Transversal movement speed [Max] 500 mm/min

Transversal movement speed variation 0,5%

Functions

Speed display ✓

Repeat function ✓

Length measuring - zero setting ✓

Limit switch ✓

Power Supply

Input voltage power supply / power [Max] 230 V AC, 50 Hz

Input voltage device / power [Max] 230 V AC, 50 Hz

Plug-in power supply type Built-in power supply

Supplied power supply Power supply unit

Plug-in power supply / adapter for countries - optional EURO
UK
CH

Environmental conditions

Ambient temperature [Min] 10 °C

Ambient temperature [Max] 40 °C

Storage temperature [Min] -10 °C

Storage temperature [Max] 40 °C

Packing & Shipping

Readability force [d] (N) 2 d

Dimensions packaging (W×D×H) 470×370×1150 mm

Net weight 35 kg

Shipping method Freight

Net weight approx. 36 kg

Gross weight approx. 50 kg

Shipping weight 49 kg

Pictograms

STANDARD



Category

Brand	Sauter
Product category	Test bench
Product group	Test stand set
Product family	TVO-LD

Measuring System

Length measuring device	Length measuring device with data interface
Measurable length [Max]	52 cm

Approval

CE mark	✓
---------	---

Display

Display type	LED segments
Display type	7 segment LED
Display digit height - smallest digit	9 mm

Construction

Dimension (W×D×H)	980×405×265 mm
Dimension housing (W×D×H)	980×405×265 mm
Dimensions completely mounted (W×D×H)	980×405×265 mm
Material display housing	Metal
Generated force [Max]	1 kN
Mounting - force application	5 × threaded hole M6
Mounting - force dissipation	5 × threaded hole M6
Measurement alignment	vertical
Type of drive	Stepper motor
Traverse distance [Max]	500 mm
Transversal movement speed [Min]	1 mm/min